

CL36EV | 21F | 121F | 221F | 321F | 421G | SL12 | SL12 TR | SL15 | SL22EV | SL23 | SL27 | SL27 TR | SL35 TR | SL50 TR

COMPACT WHEEL LOADERS & SMALL ARTICULATED LOADERS



GETTING THE JOB DONE, CASE AFTER CASE.



Every day, the case for CASE Construction Equipment grows stronger — from delivering smart solutions for tough on-site challenges to providing the next generation of builders the tools needed to succeed, CASE machines are backed by more than 180 years of grit, sweat and get-the-job-done efficiency.

That no-nonsense attitude extends to our team, too: with over 300 North American dealer locations, a pipeline of inventors and engineers who will stop at nothing to create swift, smooth machines, service technicians who offer fix-it-right the first time service, and an expansive parts inventory available at your fingertips, we're serious about offering steadfast sales, service and support as your construction equipment partner.

Together, we're not just building infrastructure — we're building stronger communities on a rock-solid foundation of hard work, hustle and pragmatic innovation. Because when it comes to helping you achieve your goals, no one will outwork us.

COMPACT WHEEL LOADERS (CWL) & SMALL ARTICULATED LOADERS (SAL)

02 CASE Story

03 CWL Overview

05 CWL Features & Benefits

09 SAL Overview

10 SAL Features & Benefits

12 Specifications

17 Attachments

18 Value of Support



COMPACT >>>>>>>>>> WHEEL LOADERS



MORE MUSCLE TO

MAKE THE RIGHT MOVES.



CL36EV



21F



121F



221F



321F



421G

Dominating dirt is easy with CASE Compact Wheel Loaders (CWL). With loads of muscle to scoop, push and move — plus plenty of comfort and control features — these beasts are custom-built for turning heavy construction, landscaping and agriculture jobs into business-boosting opportunities.

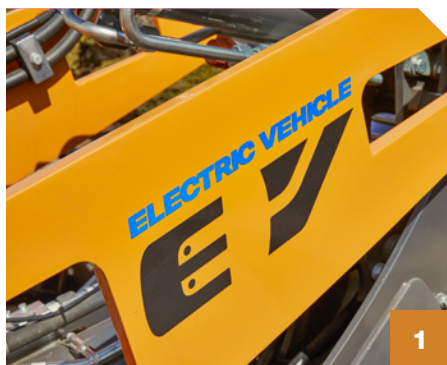
Build your fleet to match your needs: CASE F Series Compact Wheel Loaders offer the perfect combination of maneuverability and agility for standard applications, while the CASE 421G Wheel Loader provides enhanced power and durability for demanding worksites without sacrificing versatility. For projects where clean and quiet operation is a must, the zero-emission CASE CL36EV Electric Compact Wheel Loader delivers impressive efficiency and productivity, opening up opportunities for use in supply yards, large-scale building renovations and indoor construction.

Whatever your jobsite demands, CASE has the compact wheel loader solution to help you move more and grow your business.



COMPACT FOOTPRINT. MASSIVE OUTPUT.

Need to supercharge your fleet? The CASE CL36EV Electric Compact Wheel Loader gives you loads of powerful breakout force and a high loader hinge pin height.



1

1 NO NOISE. NO EMISSIONS. NO WASTE.

The CL36EV only uses energy when the machine is operating — so no power is wasted. Plus, no noise and no emissions allow you to tackle jobs indoors and in other restricted areas.



2

2 POWERED UP.

With 3.6 tons of job-crushing power, 6,278 lb of breakout force, a 10 ft 11.5 in loader hinge pin height and a huge array of attachment options, you've got all the tools you need to crush jobs quickly.



3 CONVENIENT CHARGING.

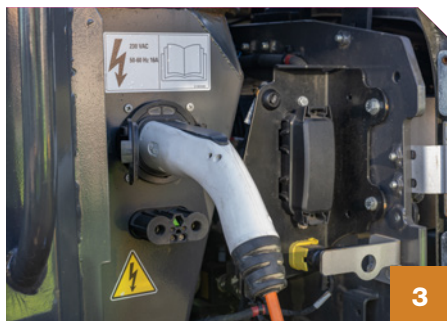
Pick up a charge at any J1772 Level 2 automotive charging station.

4 BIG SERVICE BENEFITS.

Fewer moving parts, no engine maintenance and longer service intervals make the CL36EV simple to service and maintain.

5 COMFORTABLY RECHARGE.

A roomy cab with an adjustable seat, ergonomic controls and nearly 360-degree visibility makes for a comfortable operating experience.



3



4



5

CL36EV KEY SPECIFICATIONS

ELECTRICAL POWERTRAIN

Nominal Battery Voltage	96V
Battery Capacity	23 kWh
On-Board Charger	SAE J1772 vType 1
Charging Time 20-80%	5 hr
Charging Time 0-100%	8 hr
Run Time	2-5 hr depending on application

WARRANTY

Vehicle Base Warranty	2 year / 2,000 hour
Electric Powertrain Warranty*	3 year / 3,000 hour
EV Care**	3 year / 3,000 hour

*includes all electric powertrain system components including battery, motors, inverters, etc.

**more details on EV Care available on page 19

POWER MEETS PRECISION.

Plenty of muscle, lots of comfort and simple to operate — CASE F Series Compact Wheel Loaders pack tons of benefits under the hood.



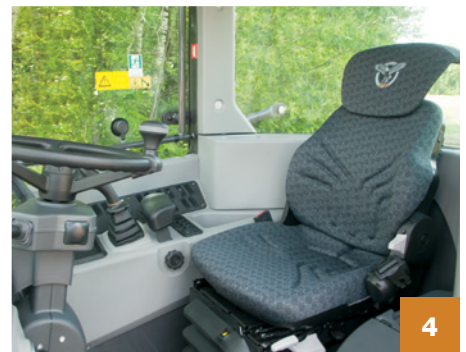
1



2



3



4



5

1 NO DEF, NO REGEN.

Tier 4 Final emission solutions mean no regeneration, no costly filter replacements, no extreme exhaust temperatures and zero after-treatment fluids to worry about.

2 COMPACT MUSCLE.

A dense frame offers a tighter turning radius and better clearance in constricted spaces while Z-bar linkage maximizes breakout force for even the biggest jobs and better visibility.

3 LIGHTNING-FAST HYDRAULIC HOOKUPS.

Skid steer style coupler and auxiliary hydraulic connections let you swap attachments fast, giving you more flexibility to adapt.

4 COMPACT COMFORT.

Shut out noise, dust and debris with a fully sealed cab that maximizes comfort while cushy ergonomics, optional climate control and radio options turn your workspace into a personal command center.

5 COMPLETE CONTROL.

Use optional Creep Speed to independently set engine rpm (revolutions per minute) and ground speeds for more control over performance and attachments.

MIGHT MEETS MANEUVERABILITY.

Built with the versatile spirit of a compact wheel loader and the unrelenting strength of a heavy construction giant, the CASE 421G is the perfect machine for meeting major demands.



1



2



3



4

1 PACK A POWERFUL PUNCH.

Tackle heavy loads with a 112 hp (gross) turbocharged diesel engine, breakout force of 15,806 lb and standard bucket capacity of 1.9 yd³ (1.5m³) bucket that lets you move lots of material fast.

2 FUEL YOUR NEXT JOB.

ECO mode reduces fuel consumption on demand, letting you cut energy costs during lighter operations while upping your power and output when you need it.

3 DO MORE WITH ONE MACHINE.

Advanced SCR-T technology ensures compliance with Stage V emissions while maximizing performance.

4 GET WHERE YOU NEED TO GO.

Fit in narrow spaces, move through tight corridors and comfortably tackle indoor jobs thanks to a compact design with a tight turn radius.

SMALL >>>>>> ARTICULATED LOADERS



READY TO DO BIG THINGS?



You can do big things with a CASE Small Articulated Loader (SAL). You are able to tackle all kinds of construction and landscaping jobs while being compact enough to be transported with a pickup and small trailer. Small articulated loaders give you proven horsepower, lifting capacity and productivity in one package—what job do you want to tackle next?

A BIG LIST OF FEATURES TO GET THE JOB DONE.

They're efficient. They're compact. And they're loaded with tools to tackle everything on your plate. Take a look at some of the business-building benefits CASE Small Articulated Loaders have to offer.



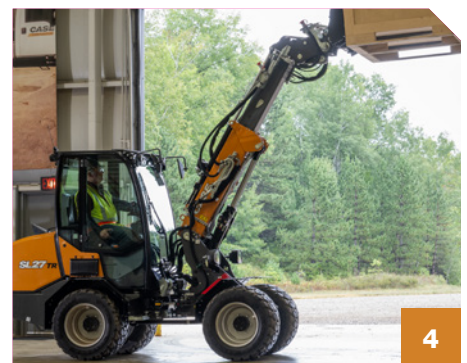
1



2



3



4

1 BIG ARTICULATION BENEFITS.

CASE Small Articulated Loaders are designed to be nimble, making maneuvering in tight spaces, narrow paths and against walls a cinch. A front articulating frame offers clear sightlines and reduces surface skidding, scuffing and other ground damage while improving comfort and stability on uneven surfaces.

2 FAMILIAR COMFORT.

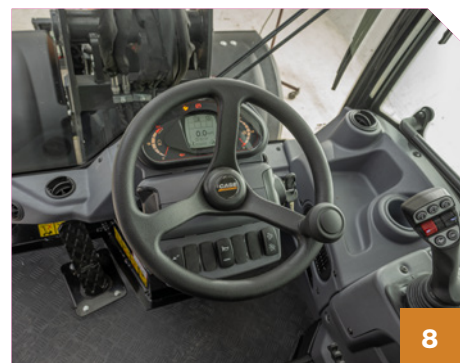
With 360-degree visibility and an ergonomic operator station, CASE Small Articulated Loaders feel comfortable and familiar.

3 SIMPLE SERVICE.

A low machine height means service points are easily reachable at ground level. Designs that prioritize quick maintenance checkpoint access slash downtime and keep you up and running longer.

4 REACH FURTHER.

Several CASE Small Articulated Loaders (SL12 TR, SL27 TR, SL35 TR and SL50 TR) offer telescoping arms for added reach, letting you easily load trucks and move material from hard-to-reach areas.



5 ONE MACHINE. 70+ ATTACHMENTS.

Small frame models (SL12, SL12 TR, SL15) use Common Industry Interface (CII) couplers, while other models use SAE couplers, providing compatibility with skid steer, compact track, and compact wheel loaders. This versatility allows for greater flexibility and efficiency on the job site.

6 GO ELECTRIC.

You won't hear it, but the SL22EV gets the job done — this electric model delivers all the power of a diesel loader with zero emissions and next to no noise. That makes it ideal for indoor work or other environments where EV equipment is a must.

7 TAKE YOUR BUSINESS ANYWHERE.

A light frame makes CASE Small Articulated Loaders the perfect tool for highly mobile operations.

8 COMMAND YOUR COMFORT ZONE.

An adjustable seat, tilt steering column, dual-side opening safety doors and optional hand throttle put total control at your fingertips — because when you're comfortable, you're unstoppable.



SL22EV KEY SPECIFICATIONS

ELECTRICAL POWERTRAIN

Nominal Battery Voltage	48V
Battery Capacity	24.9 kWh
On-Board Charger	240V 1Ø NEMA 6-20
Charging Time 20-80%	5.2 hr
Charging Time 0-100%	8.7 hr
Run Time	5-6 hr depending on application

WARRANTY

Vehicle Base Warranty	2 year / 1,000 hour
Electric Powertrain Warranty*	3 year / 3,000 hour

*includes all electric powertrain system components including battery, motors, inverters, etc.

BUILD YOUR FLEET FROM THE GROUND UP.



SPECIFICATIONS	21F	121F	221F	321F	421G	CL36EV
Engine	FPT F5H FL463 B	FPT F5H FL463 C*F001	FPT F5H FL463 A	FPT F5H FL463 A	FPT F5M GL413J	—
Displacement/ Cylinders — in³ (L)	207.9 (3.4) / 4	207.9 (3.4) / 4	207.9 (3.4L) / 4	207.9 (3.4L) / 4	220 (3.6) / 4	—
Emissions Certification* Solutions	Tier 4 Final Certified (CEGR, DOC)	Tier 4 Final Certified (CEGR, DOC)	Tier 4 Final Certified (CEGR, SCR)	Tier 4 Final Certified (CEGR, DOC)	Tier 4 Final Stage V Certified	Zero emissions
Gross Horsepower — hp (kW)	58 (43)	64 (48)	74 (55)	74 (55)	112 (82)	Traction Motor Power 23 (17)
Net Horsepower — hp (kW)	55 (41)	60 (45)	70 (52)	70 (52)	98 (72)	Implement Motor Power 30 (22)
Peak Torque — lb ft (Nm)	181 (250)	192 (260)	232 (314)	232 (314)	232 (314)	—
Tipping Load — lb (kg)	6,997 (3 174)	6,898 (3 129)	8,014 (3 635)	8,192 (3 716)	10,725 (4 865)	3,728 (1 942)
Operating Load (ROC) - ISO — lb (kg)	2,768 (1 256)	3,364 (1 526)	4,007 (1 818)	4,265 (1 934)	6,476 (2 937)	1,779 (807)
Bucket Breakout Force — lb (kg)	9,199 (4 172)	8,971 (4 069)	10,959 (4 971)	10,076 (4 570)	15,806 (7 170)	—
Max Travel Speed Forward — mph (kph)	12.4 (20)	12.4 (20)	21.7 (35)	25 (40)	25 (40)	12.4 (20)
Ref. Bucket Capacity (heaped) — yd³ (m³)	0.92 (0.7)	1.05 (0.8)	1.2 (0.9)	1.3 (1.0)	1.96 (1.5)	0.72 (0.55)
Operating Weight — lb (kg)	10,518 (4 771)	11,826 (5 364)	12,547 (5 691)	13,633 (6 184)	19,775 (8 970)	8,911 (4 042)
Max Material Density — ISO lb/yd³ (kg/m³)	3,821 (2 267)	3,296 (1 956)	3,404 (2 020)	3,131 (1 858)	3,301 (1 959)	—
Auxiliary Hydraulics Flow Rate — gpm (L/min)	17.7 (67)	17.7 (67)	22.5 (85)	22.5 (85)	25.1 (95)	11.9 (45)
High Flow Auxiliary Hydraulics Flow Rate — gpm (L/min)	—	—	34.3 (130)	34.3 (130)	33 (125)	—
DIMENSIONS	21F	121F	221F	321F	421G	CL36EV
Hinge Pin Height — in (mm)	123.5 (3 136)	123.5 (3 182)	129.5 (3 290)	133.7 (3 395)	146.2 (3 714)	121.6 (3 088)
Dump Height (Fully Raised @ 45° Dump) — in (mm)	90.6 (2 302)	92.1 (2 339)	95.5 (2 425)	98.1 (2 493)	106.4 (2 702)	90.6 (2 302)
Bucket Reach (Fully Raised @ 45° Dump) — in (mm)	37.7 (957)	39.7 (1 009)	40.2 (1 020)	39.5 (1 003)	34.6 (880)	37.7 (957)
Height to top of ROPS — in (mm)	96.8 (2 458)	96.7 (2 457)	103.4 (2 627)	105.5 (2 680)	118.8 (3 017)	96.6 (2 453)
Ground Clearance Under Shaft — in (mm)	17.5 (444)	17.5 (444)	17.3 (440)	19.4 (493)	13.7 (349)	11 (279)
Overall Width (Without Bucket) — in (mm)	68.5 (1 740)	68.5 (1 740)	73.2 (1 860)	73.2 (1 860)	90.1 (2 289)	61.8 (1 570)
Overall Length (Bucket Level on Ground) — in (mm)	218.5 (5 549)	222.2 (5 645)	231.1 (5 869)	234.3 (5 952)	251.6 (6 390)	211.4 (5 369)
Wheelbase — in (mm)	81.7 (2 075)	81.7 (2 075)	87.6 (2 225)	87.6 (2 225)	102.4 (2 600)	75.8 (1 925)

*Note: CEGR = Cooled Exhaust Gas Recirculation

TAILOR YOUR TASKFORCE.



SPECIFICATIONS	SL12	SL12 TR	SL15	SL23	SL27	SL27 TR	SL35 TR	SL50 TR	SL22EV
Engine	D902	D902	D1105	D1803 CR	D1803 CR	D1803 CR	V2403 CR	V3307 CR	—
Displacement/ Cylinders — in³ (L)	54.8 (0.898)	54.8 (0.898)	68.5 (1.123)	91.4 (1.498)	111.4 (1.826)	111.4 (1.826)	148.5 (2.434)	203.3 (3.331)	24.9 kWh (Battery Total Usable Capacity)
Emissions Certification	Tier 4 Final/ Stage V	Tier 4 Final/ Stage V	Tier 4 Final/ Stage V	Tier 4 Final/ Stage V	Tier 4 Final/ Stage V	Tier 4 Final/ Stage V	Tier 4 Final/ Stage V	Tier 4 Final/ Stage V	Zero emissions
Gross Horsepower — hp (kW)	25 (18.5)	25 (18.5)	25 (18.5)	25 (18.5)	50 (37.0)	50 (37.0)	65 (48.6)	74 (55.4)	Traction 9 (6.5) Implement 16 (12)
Peak Torque — lb ft (Nm)	41.4 (56.1)	41.4 (56.1)	41.4 (56.1)	41.4 (56.1)	111.0 (150.4)	111.0 (150.4)	146.4 (198.5)	195.4 (265.0)	—
Fork Tipping Load (ISO) Straight* — lb (kg)	1,435 (650)	1,665 (755)	2,680 (1 215)	2,930 (1 330)	4,400 (1 995)	3,750 (1 702)	4,795 (2 175)	5,910 (2 680)	3,095 (1 405)
Max Travel Speed — mph (kph)	9.3 (15)	9.3 (15)	11.8 (19)	12.4 (20)	18.6 (30)	18.6 (30)	18.6 (30)	21.6 (34.7)	11.2 (18)
Operating Weight (Open Cab) — lb (kg)	2,425 (1 100)	2,646 (1 200)	3,362 (1 525)	5,181 (2 350)	5,732 (2 600)	5,940 (2 694)	8,818 (4 000)	11,464 (5 200)	4,850 (2 200)
Auxiliary 1: Max Flow Rate — gpm (L/min)	7.4 (28)	7.4 (28)	11.1 (42)	8.5 (32)	13.5 (51)	13.5 (51)	18.5 (70)	20.6 (78)	9.2 (35)
DIMENSIONS	SL12	SL12 TR	SL15	SL23	SL27	SL27 TR	SL35 TR	SL50 TR	SL22EV
Hinge Pin Height — in (mm)	85.4 (2 170)	110.2 (2 800)	81.4 (2 800)	111 (2 825)	99.2 (2 520)	146 (3 710)	169 (4 310)	171 (4 350)	96.5 (2 450)
Dump Height (Fully Raised @ 45° Dump) — in (mm)	54.3 (1 380)	83.4 (2 120)	53.5 (1 360)	96.4 (2 450)	68.9 (1 750)	114.9 (2 920)	122 (3 100)	133 (3 400)	66.1 (1 680)
Height to top of ROPS** — in (mm)	81.4 (2 060)	81.4 (2 060)	87.7 (2 230)	90.5 (2 300)	92.1 (2 340)	92.5 (2 350)	91.7 (2 330)	100.3 (2 550)	90.6 (2 300)
Overall Width** (Without Bucket) — in (mm)	37.7 (960)	37.7 (960)	43.3 (1 100)	49.3 (1251)	53.5 (1 360)	53.5 (1 360)	57.8 (1 470)	61.4 (1 560)	48.4 (1 230)
Overall Length (Without Bucket) — in (mm)	87.0 (2 211)	87.0 (2 211)	107.0 (2 718)	123.8 (3 145)	136.5 (3 468)	145 (3 683)	160.1 (4 067)	209.1 (5 310)	150.8 (3 830)
Wheelbase — in (mm)	47.4 (1 205)	49.1 (1 247)	55.9 (1 419)	62.2 (1 580)	66.9 (1 700)	66.9 (1 700)	77.6 (1 972)	80.5 (2 044)	62.2 (1 580)

*Measured at Mid Fork

**Equipped with smallest available tire option.

THE RIGHT MACHINE. NO COMPROMISES.

SPECIFICATIONS	21F	121F	221F	321F	421G	CL36EV
Open Canopy ROPS	○	○	○	○	—	○
Cab w/ Heater and A/C	●	●	●	●	—	—
Deluxe Cab with Heater Only	—	—	—	—	—	●
Deluxe Cab w/ Heater and A/C	○	○	○	○	●	—
Telescoping steering column (with deluxe cab)	○	○	○	○	○	●
Vinyl suspension seat (with open canopy)	○	○	○	○	—	●
Cloth mechanical suspension seat	●	●	●	●	—	—
Cloth air suspension seat	○	○	○	○	●	—
LCD Display with Rotary Encoder	●	●	●	●	●	●
Radio	○	○	○	○	●	●
Rear view camera	●	●	●	●	●	—
SSL compatible coupler, hydraulic powered	●	●	●	●	—	—
Horizontal Pin coupler, hydraulic powered	○	○	○	○	—	—
JRB Compatible Coupler, hydraulic powered	—	—	—	—	○	●
4 corner strobes	●	●	●	●	●	●
Ride control boom suspension	—	—	—	—	—	●
Automatic, speed-activated ride control	○	○	○	○	●	—
4-wheel drive	●	●	●	●	●	●
Hydrostatic transmission	●	●	●	●	—	—
Hydrostatic transmission w/ shift-on-the-fly	—	—	—	—	●	—
High speed axles	—	—	○	○	●	—
Limited slip differential	●	●	●	●	●	●
Differential lock	—	—	○	○	○	—
Drum brakes (front and rear)	●	—	—	—	—	—
Wet disc brakes (front and rear)	—	—	●	●	●	●
Wet disc brakes (front only)	—	●	—	—	—	—
Creep speed	○	○	○	○	●	—
Single Function Auxiliary Hydraulics	●	●	●	●	●	●
Double Function Auxiliary Hydraulics	○	○	○	—	—	○
Single Function High Flow Auxiliary Hydraulics	—	—	—	○	○	—
Double Function High Flow Auxiliary Hydraulics	—	—	—	○	○	—
Adjustable electro-hydraulic (EH) controls	●	●	●	●	●	●
Return-to-Dig functions	●	●	●	●	●	●
Front and Rear Work Lights	●	●	●	●	●	—
LED Work Lights	○	○	○	○	●	●
Cold Weather Package (battery, oil, block heater)	○	○	○	○	○	—
120/240V on-board charger	—	—	—	—	—	●
Battery DC fast-charge connector	—	—	—	—	—	●
Offboard DC fast charger	—	—	—	—	—	○
CASE SiteWatch Telematics (5 year)	●	●	●	●	●	●

● Standard ○ Optional — Not Applicable

COMPARE OUR JOB-CRUSHING OPTIONS.

SPECIFICATIONS	SL12	SL12 TR	SL15	SL22EV	SL23	SL27	SL27 TR	SL35 TR	SL50 TR
ROPS/FOPS safety roof	●	●	●	●	●	●	●	●	●
Mechanical suspension vinyl seat	—	—	—	—	●	●	●	—	—
Enclosed cab with heat	—	—	●	●	●	●	●	—	—
Air suspension seat	—	—	—	●	●	●	●	—	—
12 volt system	●	●	●	—	●	●	●	●	●
1 boom worklight	—	—	—	●	—	●	●	●	●
2 cab rear work lights	○	○	○	○	○	○	○	○	○
Rotating beacon light	○	○	○	○	○	○	○	○	○
2 front cab work lights	●	●	●	●	●	●	●	●	●
Glow plug starting aid	●	●	●	—	●	●	●	●	●
Engine block heater	●	●	●	—	●	●	●	●	●
Locking fuel cap	●	●	●	—	●	●	●	●	●
Cyclone air filter	—	—	—	—	●	●	●	●	●
1x dual acting auxiliary hydraulics	●	●	●	—	●	●	●	●	●
2x dual acting auxiliary hydraulics	○	○	○	—	○	○	○	○	○
Auxiliary hydraulic hold function	○	○	○	—	○	○	○	○	○
High flow auxiliary hydraulics	—	—	—	—	—	—	○	—	—
Hydraulic boom suspension (ride control)	○	○	○	○	○	○	○	○	○
Standard lift path	●	—	●	—	●	●	●	—	—
Telescopic reach loader arm	—	●	—	—	—	—	—	●	●
Telescoping boom	—	—	—	—	—	—	●	—	—
Loader lift arm support strut	●	●	●	—	●	—	●	●	●
SSL compatible attachment coupler, hydraulic powered	—	—	—	—	—	●	●	●	●
CII mechanical attachment coupler	●	●	●	—	—	—	—	—	—
Additional counterweights	●	●	●	—	●	●	●	●	●

● Standard ○ Optional — Not Applicable

GO AHEAD. GET ATTACHED.

Whether your next job demands a CASE Compact Wheel Loader or Small Articulated Loader, there's an attachment ready and waiting for you. Compact wheel loaders offer lightning-fast attachment changes and more hydraulic flow options for power-hungry tools, while small articulated loaders give you loads of utility — 70+ attachments and counting. Take a look and see for yourself.



See our full line at
**CASECE.COM/
ATTACHMENTS**



Angle Broom



Snow Pusher



Power Rake
(Soil Conditioner)



Snow Blower



Side Discharge Bucket



4-in-1 Bucket



Scrap Grapple



Root Rake



Log Grapple



Cold Planer



Auger

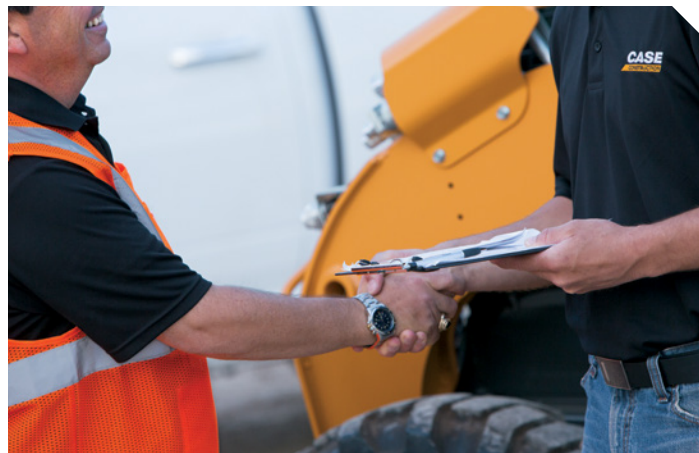


Rotary Cutter



NO ONE OUTWORKS US.

The customer doesn't just come first — you're at the center of everything we do. Your local CASE specialists are ready to help you do more of everything you do best: maximizing production, cutting costs and improving safety through a variety of services and technology.



Base & Extended Limited Warranty Coverage.*

- 1-year/Unlimited-hour full-coverage base limited warranty
- 2-year/2,000-hour extended limited engine warranty. Discuss the extended warranty coverage details with your dealer.

CNH CAPITAL Performance Equipment Demands Performance Financing.

From protection plans to customized leasing packages, our financial solutions through CNH Capital are engineered for businesses that don't have time for downtime.



Tech that Delivers.

Command Your Fleet with SiteWatch™ Telematics

CASE SiteWatch Telematics puts real-time data in your hands. Track location, monitor working status and anticipate maintenance needs across your entire fleet — helping you turn good data into good decisions.

Precision Machine Control that Pays for Itself

SiteControl machine control solutions don't just improve accuracy — they transform profitability. Up your efficiency, productivity and profits anywhere the job takes you.

Local Support. National Strength.

We back tough equipment with even tougher support. With over 300 dealer locations across North America, CASE delivers the right equipment, financing solutions and after-sale support to keep your business moving forward. That's the kind of boots-on-the-ground business support you can expect — and rely on — from CASE.

*See your CASE dealer for limitations, exclusions and confirmation of policies in effect. Engine/EV Batteries warranty coverage provided through CASE. Second year machine warranty coverage applies after base warranty expires.



Protect Your Investment.

EV Care

EV Care is our unique and comprehensive support package exclusively available for our EV models. EV Care consists of a 5-year Advanced SiteWatch™ Subscription, a 3-year/3,000 hour battery and EV components factory warranty and 3-year/3,000 hour planned maintenance.

PlusCare

Choose service options that match how hard you work. CASE PlusCare protects your equipment investment with customizable maintenance support tailored to your operation's demands. [Scan QR code for more information >](#)



Planned Maintenance Agreements (PMAs)

Get clear, detailed maintenance plans that maximize performance while driving down operating costs, allowing you to focus on what matters — building your business.

Purchased Protection Plan (PPP)

Get protection beyond the base warranty period for both new and used CASE equipment, with flexible payment options and customizable terms through CNH Capital. you to focus on what matters — building your business.

>>> COUNTLESS SOLUTIONS



Mini Track Loaders



Skid Steer Loaders



Compact Track Loaders



Compact Dozer Loaders



Mini Excavators



Midi Excavators



Small Articulated Loaders



Compact Wheel Loaders



Electric Vehicles



Backhoe Loaders



Tractor Loaders



Rough Terrain Forklifts



Compaction



Dozers



Large Wheel Loaders



Motor Graders



Wheeled Excavators



Large Excavators

NO ONE WILL OUTWORK US.™

CASE
CONSTRUCTION

©2025 CNH Industrial America LLC. All rights reserved. CASE and CNH Industrial are trademarks registered in the United States and many other countries, owned by or licensed to CNH Industrial N.V., its subsidiaries or affiliates. Any trademarks referred to herein, in association with goods and/or services of companies other than CNH Industrial America LLC., are the property of those respective companies.

IMPORTANT: CASE Construction Equipment Inc. reserves the right to change these specifications without notice and without incurring any obligation relating to such change. Availability of some models and equipment builds vary according to the country in which the equipment is used. The illustrations and text may include optional equipment and accessories and may not include all standard equipment. Your CASE dealer/distributor will be able to give you details of the products and their specifications available in your area.

CASE Construction Equipment is biodiesel-friendly.

NOTE: All engines meet current EPA emissions regulations. All specifications are stated in accordance with SAE Standards or Recommended Practices, where applicable.

Always read the Operator's Manual before operating equipment. Inspect equipment before using it, and be sure it is operating properly. Follow the product safety signs and use any safety features provided.